

CHaRM PRICES AND GUIDELINES

**** PLEASE NOTE:** There is a \$3 FACILITY FEE for every vehicle visiting the CHaRM to recycle hard-to-recycle materials. See FAQs for more info. **

ELECTRONICS, ETC.

NEW! SAMSUNG CONSUMER ELECTRONICS

- No charge except for the \$3 facility fee!
See FAQs section for more info.

AUDIO EQUIPMENT

- Home Stereo Components: \$8
- Car Stereos: \$4

COMPUTERS & COMPUTER EQUIP.

- Monitors 19" or smaller: \$10
- Monitors 20" to 34": \$15
- Towers/CPUs: \$8
- Printers/scanners: \$8
- Laptops: \$4
- Uninterruptable Power Supply (UPS): \$8
- Large misc. computer equip.: 30¢/lb.
- Keyboards, mice, cables



PRINTER CARTRIDGES

- Ink jet and laser jet printer cartridges

COPIERS & FAX MACHINES

- Fax Machines: \$8
- Desktop Copiers: \$8
- Large Copiers (more than 40 lbs.): 30¢/lb.

PHONES

- Mobile Phones
- Office Phones: \$4
- Home Phones: \$2



SMALL ELECTRONIC ITEMS

- PDAs, iPods, Walkmans and Gameboys: \$2
- Video Game Systems: \$4 – \$8 (depending on size)

TVs, VCRs & DVD PLAYERS

- TVs 19" or smaller: \$10
- TVs 20" to 34": \$15
- Consoles, TVs larger than 34": \$30
- VCRs/DVD Players: \$8
- Satellite Boxes: \$8



PLASTICS These hard-to-recycle plastics are not accepted in curbside bins.

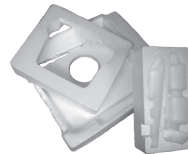
NEW! PLASTIC BAGS & PLASTIC BUBBLE WRAP

- Includes plastic shopping & newspaper bags, ziplock bags & bubble wrap
- Must be clean, dry and empty
NO moisture, receipts, or food waste inside bags, black trash bags, biodegradable plastic, tape, packing peanuts or foam wrap



#6 WHITE BLOCK FOAM

- #6 White block foam packaging and rigid foam insulation only
- Businesses: \$6 per cubic yard
NO packing peanuts, Styrofoam® cups or "to-go" boxes, moisture or tape



The CHaRM will also take your single-stream recyclables!

There is no fee to recycle these "traditional" materials. Find single-stream guidelines at www.ecocycle.org.



NEW! SCRAP METAL

ITEMS THAT ARE AT LEAST 50% METAL, INCLUDING APPLIANCES

- Items without Freon®: no charge
- Items WITH Freon® (air conditioners, refrigerators, freezers, humidifiers): \$15
NO wire fencing, oil or fuel in motors, batteries, or propane canisters.



*** THERE IS NO FACILITY FEE FOR DROPPING OFF SCRAP METAL ***

TEXTILES

REUSABLE SHOES & TEXTILES

- Paired, reusable shoes (no mud)
- Clothing, bedding, towels and fabrics

*Items may be stained or ripped, but they must be clean. Must be 12" square or larger.
NO bathing suits, underwear or socks*



BIG DURABLE #2 PLASTICS

- Large plastics marked with a #2 such as plastic toys like plastic play structures, plastic lawn furniture, plastic watering cans, clean #2 plastic buckets (no residue layer; metal handle OK), clean plastic barrels, crates, rigid backyard kiddie pools and plastic trash containers with a #2.

• In some cases, these plastics may not be marked with a #2, so look for them to be opaque with a matte finish and hollow inside. They are made with a mold, so will likely have a seam where two halves were joined.

Please remove non-plastic parts. NO flower pots without a #2, inflatable pools or other inflatable plastics, water beds, chew toys, CD jewel cases, small toys such as action figures, etc.



BICYCLES & PARTS

BICYCLES & BIKE PARTS

- Any condition
- Includes integral parts such as seats, pedals, handlebars, wheels, etc., and metal accessories such as baskets and Pannier racks
NO other accessories or sporting goods



BICYCLE TIRES & INNER TUBES

- Tires: \$0.50 each

MISCELLANEOUS

BOOKS & MANUALS

- Computer and office manuals
- Hard-bound books and paperbacks



COOKING OIL

- Such as canola, corn, vegetable, olive and sesame oils
NO motor oil or any oil used for purposes other than cooking.

FIRE EXTINGUISHERS

- City of Boulder Residents with ID: no charge for this item
- Non-Boulder Residents: \$4

PORCELAIN TOILETS, SINKS & URINALS

- Toilet, with non-porcelain materials removed: \$4
- Toilet, with non-porcelain materials attached: \$10
- Sink or urinal: \$2; With plumbing attached: \$5



Porcelain MUST be as clean as possible. NO biohazards.

YOGA MATS

- Plastic foam, rubber foam and jute yoga mats: \$1
Mats must be clean. NO badly soiled, stained or smelly mats. NO tatami or grass mats. NO rugs or carpet.

BUSINESSES: Call 303.444.6634 ext. 2 for large volumes and see the back page for our CHaRM on the Road service.

CHaRM FAQs

Q: Why is there a \$3 facility use fee in addition to the recycling fees that apply to specific materials?

A: The operating costs of the CHaRM have increased. To keep this important service going, we need financial support from you, our third partner, in addition to subsidies from Eco-Cycle® and the city of Boulder.

Did you know? Bicyclists are not charged a facility fee! See our map for how to get here on your bike. (Material fees still apply.) Other ways to save include carpooling and purchasing our Frequent CHaRMer Card, which gives you five trips for \$10.

Q: Why is it important to keep electronics out of the landfill?

A: Electronics contain a host of toxic substances such as lead, cadmium, mercury and arsenic. These dangerous substances can contaminate groundwater when landfilled.

Q: Why are there recycling fees for some materials?

A: Fees for electronics cover the costs of disassembling the materials, which can be a labor-intensive process that includes handling hazardous substances. The funds are also used to offset the costs of collecting, storing and marketing the materials.

Beware of “free” electronics recycling events: The materials are often exported to developing countries, where they are dismantled under horrific conditions that are harmful to the workers, local community and environment. Learn more at www.ecocycle.org/charm.

Q: Why are Samsung consumer electronics free to recycle?

A: Samsung has made the CHaRM an official partner in its voluntary manufacturer take-

back program by paying the recycling costs of Samsung consumer electronic products. This is an example of a principle called Extended Producer Responsibility, which has been adopted in dozens of states and countries around the world. Learn more at www.electronicstakeback.com.

Q: What happens to my electronic equipment after I drop it off at the CHaRM?

A: All electronic equipment is sent to our certified e-Stewards recycler for processing into raw materials that are then used to manufacture new products. Hard drives are either shredded or data wiped to DoD level 7. This means they are overwritten 7 times and then tested for data before reuse.

Q: What happens to the other items I drop off at the CHaRM?

A: Please visit www.ecocycle.org/charm to find out!

BUSINESSES: receive Hard-to-Recycle collection with CHaRM on the Road

With CHaRM on the Road, we provide easy-to-store recycling collection containers, CHaRM guidelines and free training for employees. Reduce waste, support new and local recycling markets, and prevent pollution—sign up today!

303.444.6634 ext. 2
www.ecocycle.org/businesses



Funded in part by
City of Boulder
Trash Tax Dollars

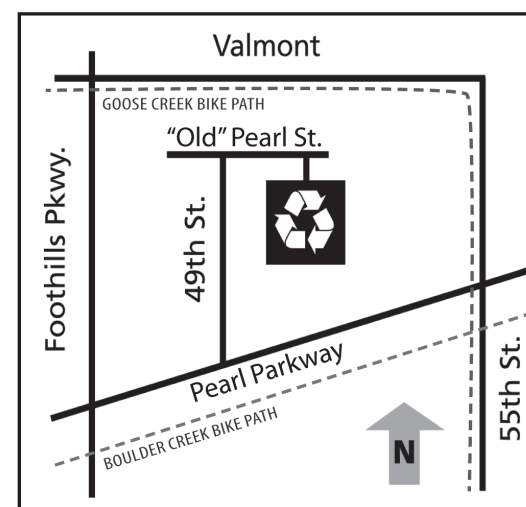


WE RECYCLE OUR ELECTRONICS RESPONSIBLY

Eco-Cycle has partnered with a Certified e-Stewards Recycler to process and recycle all electronic equipment. e-Stewards is the world's most rigorous environmental and social justice criteria for recycling e-waste. Our materials are recycled domestically and responsibly. Learn more at www.ecocycle.org/charm.

CHaRM

5030 “Old” Pearl St., Boulder
Monday – Saturday
9 am – 4 pm



Printed on 100% post-consumer recycled paper.

eco-cycle®

Working to Build Zero Waste Communities

303.444.6634 • www.ecocycle.org/charm

Eco-Cycle®/City of Boulder

CHaRM

Center for
Hard-to-Recycle
Materials

*Your one-stop drop for recycling unusual
and traditional items.*

materials accepted for recycling and reuse •
guidelines • prices • FAQs • map

